



# Embracing Diversity

Easy English



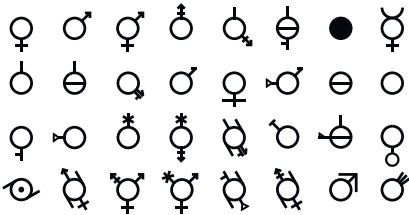
Aspect makes sure everyone is included, equal and their Human Rights are respected.



Aspect knows that celebrating differences is an important part of its organisation. People can be different in:



- Age



- Gender

- Identity



- Culture or language



- Race



- Religion



- Ability



- Sexual Orientation



- Marital Status



- Family Structure





## Aspect Programs

Aspect wants to help you and your family keep your cultural identity and ties to your community.



Our programs, schools and activities look at your needs and your differences by listening and learning.



This helps us to plan services, supports and schools with you and the people important to you to make sure you can join in. You are kept at the centre of your support or service.



## Aspect Staff

Aspect wants people from all different backgrounds to work with us. We want staff to share what they know with us to make our work better.

Aspect helps staff understand and work with your needs.

## Supporting diversity



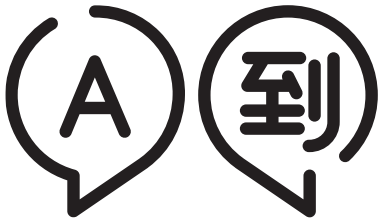
Aspect will ask you about your needs so that our staff will understand how they can best support you



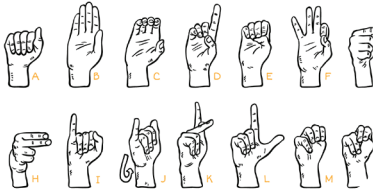
To help you understand our work, we may:



- give out information in different formats. For example, in different languages or using pictures.



- use interpreters.



- use different communication systems.



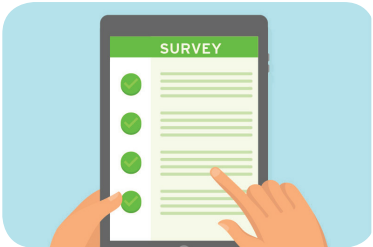
- talk to advocates.

## IDEAS

- get advice from community organisations.



- find out about information in the community.



- ask questions using surveys.

This document was adapted from the Aspect Embracing Diversity Policy that can be found on the Aspect website at [www.autismspectrum.org.au](http://www.autismspectrum.org.au).

This document was developed in consultation with a variety of individuals throughout Aspect.

Should you need support to understand Aspect's written information in a language other than English, please call TIS on 131 450 to request an interpreter in your preferred language, and ask for Autism Spectrum Australia (1800 277 328).