

International study to improve interactions between Autistic people and the criminal justice system

ARCAP is a member of the [Global Autism and Criminal Justice Consortium](#) which is working to improve interactions between Autistic people and the criminal justice system (CJS).

A CJS policy brief was developed by the consortium of 50 international members:

- Autistic individuals
- parents/carers
- CJS professionals
- policymakers
- researchers



A subgroup designed the Global Criminal Justice Survey to capture CJS experiences of Autistic individuals, parents and carers and criminal justice professionals.

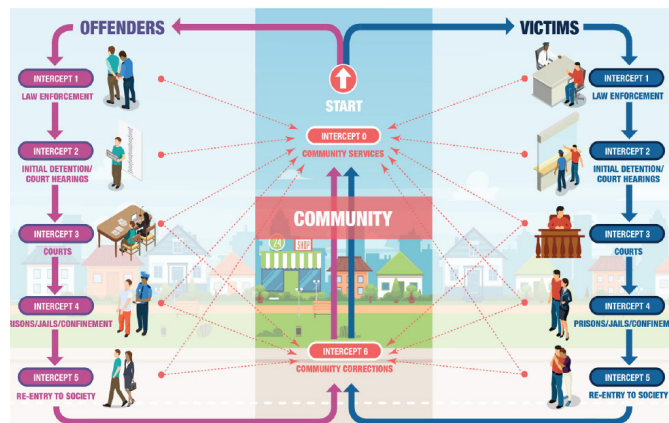


Data from the survey will be used to inform policy changes and increase awareness of autism.

Survey design

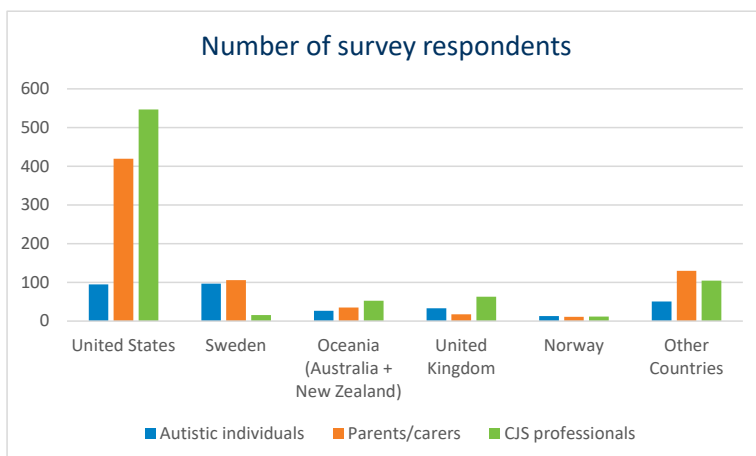
The consortium developed a new framework - Sequential Intercept Model - used to organise research and identify gaps in CJS research.

The SIM consists of six intercepts with the CJS, where intervention could divert individuals from further involvement.



The Global Criminal Justice Survey was developed to gather perspectives at each intercept of the CJS. It was translated into 15 languages. The survey measures Autistic adults' and parents'/carers' perceived autism knowledge and autism knowledge of criminal justice professionals and police attitudes (e.g. perceived procedural justice and police legitimacy).

Survey responses



1706 respondents

3165 Autistic individuals

720 parents/carers

796 CJS professionals

Next steps

Analysis of the data will identify both common and unique themes across contexts, stakeholders and nations which will facilitate the development of comprehensive policy recommendations, practical strategies and future research directions.