



Fees guide

Effective July 1, 2023
to June 30, 2024

Table of contents

Fees	4
User guidelines	12
About Aspect Therapy	14
Frequently Asked Questions	17

Autism Spectrum Australia (Aspect)

PO Box 697
Chatswood, NSW 2057

www.autismspectrum.org.au

This material may not be copied (except as legally allowed for private use and study) or further disseminated without the express and written permission of the legal holder of the copyright.

© Autism Spectrum Australia (Aspect)

ABN 12 000 637 26

Aspect is a registered NDIS service provider.

For information on what being a registered provider means, please visit the [NDIS commission website](#).

The supports provided by Aspect Therapy belong to the following NDIS Registration Groups:

- **Specialist Positive Behaviour Support** (Group **110**)
- **Development Of Daily Living And Life Skills** (Group **117**)
- **Early Intervention Supports For Early Childhood** (Group **118**)
- **Therapeutic Supports** (Group **128**)

Each registration group includes

- a number of support services, with a rate for each service priced separately by the NDIS.
- a support purpose of **Core** or **Capacity Building**.

Our fees vary in accordance with the NDIS price guide which can be viewed at:

<https://www.ndis.gov.au/providers/price-guides-and-information>

NDIS fees

Face to face & teletherapy supports

SPECIALIST POSITIVE BEHAVIOUR SUPPORT

110

SUPPORT CATEGORY: **Improved Relationships**

SUPPORT PURPOSE: **Capacity Building**

Pricing (per hour)

Support item	Non remote locations (Metro, Regional and National) MMM 1-5	Remote locations MMM 6	Very remote locations MMM 7
Specialist behavioural intervention support 11_022_0110_7_3	ACT, NSW, QLD, VIC: \$ 214.41 NT, SA, TAS: \$ 234.83	\$ 328.76	\$ 352.25
Behaviour management plan, incl. training in behaviour management strategies 11_023_0110_7_3	\$ 193.99	\$271.59	\$290.99

DEVELOPMENT OF DAILY LIVING AND LIFE SKILLS

117

SUPPORT CATEGORY: **Improved Daily Living Skills**

SUPPORT PURPOSE: **Capacity Building**

Pricing (per hour)

Support item	Non remote locations (Metro, Regional and National) MMM 1-5	Remote locations MMM 6	Very remote locations MMM 7
Training for carers/parents 15_038_0117_1_3	\$ 70.87	\$ 99.22	\$ 106.31

NDIS fees

Face to face & teletherapy supports

EARLY CHILDHOOD INTERVENTION SUPPORTS				118
SUPPORT CATEGORY: Improved Daily Living Skills				
SUPPORT PURPOSE: Capacity Building		Pricing (per hour)		
Support item	Non remote locations (Metro, Regional and National) MMM 1-5	Remote locations MMM 6	Very remote locations MMM 7	
Capacity Building for Early Childhood Intervention - Psychologist 15_001_0118_1_3	ACT, NSW, QLD, VIC : \$ 214.41 NT, SA, TAS: \$ 234.83	\$ 328.76	\$ 352.25	
Therapy Assistant Level 2 15_008_0118_1_3	\$ 86.79	\$ 121.51	\$ 130.19	
Capacity building for Early Childhood Interventions - Other Professional 15_005_0118_1_3	\$ 193.99	\$ 271.59	\$ 290.99	
Capacity Building for Early Childhood Intervention - Counsellor 15_740_0118_1_3	\$ 156.60	\$ 218.62	\$ 234.24	

NDIS fees

Face to face & teletherapy supports

EARLY CHILDHOOD INTERVENTION SUPPORTS				118
SUPPORT CATEGORY: Assistance with Daily Life				
SUPPORT PURPOSE: Core				
Support item	Pricing (per hour)			
	Non remote locations (Metro, Regional and National) MMM 1-5	Remote locations MMM 6	Very remote locations MMM 7	
Capacity Building for Early Childhood Intervention - Psychologist 01_700_0118_1_3	ACT, NSW, QLD, VIC : \$ 214.41 NT, SA, TAS: \$ 234.83	\$ 328.76	\$ 352.25	
Capacity Building for Early Childhood Interventions- Other Professional 01_740_0118_1_3	\$ 193.99	\$ 271.59	\$ 290.99	
Capacity Building for Early Childhood Intervention - Counsellor 01_606_0118_1_3	\$ 156.60	\$ 218.62	\$ 234.24	

NDIS fees

Face to face & teletherapy supports

THERAPY SUPPORTS				128
SUPPORT CATEGORY: Improved Daily Living Skills		Pricing (per hour)		
SUPPORT PURPOSE: Capacity Building				
Support item	Non remote locations (Metro, Regional and National) MMM 1-5	Remote locations MMM 6	Very remote locations MMM 7	
Assessment Recommendation Therapy or Training - Counsellor 15_043_0128_1_3	\$ 156.60	\$ 218.62	\$ 234.24	
Therapy Assistant Level 2 15_053_0128_1_3	\$ 86.79	\$ 121.51	\$ 130.19	
Assessment Recommendation Therapy or Training - Psychologist 15_054_0128_1_3	ACT, NSW, QLD, VIC : \$ 214.41 NT, SA, TAS, WA: \$ 234.83	\$ 328.76	\$ 352.25	
Assessment Recommendation Therapy or Training - Occupational Therapist 15_617_0128_1_3	\$ 193.99	\$ 271.59	\$ 290.99	
Assessment Recommendation Therapy or Training - Social Worker 15_621_0128_1_3	\$ 193.99	\$ 271.59	\$ 290.99	
Assessment Recommendation Therapy or Training - Speech Pathologist 15_622_0128_1_3	\$ 193.99	\$ 271.59	\$ 290.99	

NDIS fees

Face to face & teletherapy supports

THERAPY SUPPORTS				128
SUPPORT CATEGORY: Assistance with Daily Life				
SUPPORT PURPOSE: Core				
Support item	Pricing (per hour)			
	Non remote locations (Metro, Regional and National) MMM 1-5	Remote locations MMM 6	Very remote locations MMM 7	
Assessment Recommendation Therapy or Training Support - Occupational Therapist 01_661_0128_1_3	\$ 193.99	\$ 271.59	\$ 290.99	
Assessment Recommendation Therapy or Training Support - Speech Pathologist 01_665_0128_1_3	\$ 193.99	\$ 271.59	\$ 290.99	
Assessment Recommendation Therapy or Training Support - Psychologist 01_701_0128_1_3	NSW, VIC, QLD, ACT: \$ 214.41 WA, SA, TAS, NT: \$234.83	\$ 328.76	\$ 352.25	
Assessment Recommendation Therapy or Training Support - Other Professional 01_741_0128_1_3	\$ 193.99	\$ 271.59	\$ 290.99	

NDIS / Non-NDIS fees

Additional supports

Please ask us for a quote for the following services:

Assessments

- **Speech sound assessment**
- **Comprehensive language assessment**
- **Functional assessment**
- **Motor Assessment**
- **Sensory assessment**

Workshops

- **Hanen - More than Words TM**
- **Hanen - Talkability TM**
- **Bespoke, customised workshops**

NDIS fees for indirect supports

Indirect supports charged at agreed NDIS hourly rate

Written feedback, ISP updates	Progress notes and Individual Support Plan updates
Phone calls, emails	Communication with participant, educators and other professionals
Paperwork, forms, letters, emails	Completion of paperwork and written communication with other agencies or medical professionals
Meetings and collaboration	Meetings and collaboration with other professional(s) involved in working with the participant (parents, medical, education, NDIS, other allied health professionals and other Aspect Therapy staff)
Report writing	Completion of NDIS report/assessment report
Individual Support Plan (ISP)	Completion of Individual Support Plan and Five Point Star
Behaviour Support Plan (BSP)	Completion of BSP and 'Five Point Star'. Review of BSP based on Aspect Therapy guidelines and NDIS expectations. Completion of all report requirements for NDIS Commission.
Equipment – prescription, research, assessment, devices	Research and preparation of additional assessments, devices and any further research specific to the participant.
Resource Development	Development of resources for the participant.

Fee for Service

Therapy supports

Support item	Fee for Service
General therapy services including Occupational Therapy, Speech Therapy, Social Work, Education & Skills, Behaviour Support, Provisional Psychology	\$ 214 per hour
Registered Psychology	\$ 236 per hour
Specialist Behaviour Supports	\$ 236 per hour
Holiday and After-School Therapy Groups	up to \$ 214 per hour
Parents/Carers Supports	\$ 78 per hour

User guidelines

Cancellations



Aspect Therapy claims 100% of the agreed fee for appointment cancellations received at short notice.

A cancellation is considered **short notice** when a participant

- **does not show up for a scheduled support within a reasonable time, or is not present at the agreed place and within a reasonable time when Aspect is travelling to deliver the support;**
- **has given less than seven (7) clear days' notice for a support.**

Short notice cancellation claims will be discussed and noted in your service agreement.

Aspect will attempt to reschedule or discuss other supports that can be provided to you in the agreed service appointment time.

Aspect is committed to delivering our supports. There are no charges incurred for appointments cancelled by us.

In the unlikely event we need to reschedule or cancel your appointment, we will notify you as soon as possible and work with you to find a suitable alternative, taking into consideration your individual needs and goals.

User guidelines

Travel charges



In line with NDIS Price Arrangements and Pricing Limits, Aspect claims the costs associated with travel for each appointment when a staff member travels to home, school or other community locations.

This can include travel time, and other costs such as kilometric reimbursement, tolls and parking.

- **30 minutes** of travel per session in MMM 1 to 3 areas;
- **60 minutes** of travel per session in MMM 4 to 7 areas.

Where a staff member is traveling less than 30 or 60 minutes, rates are adjusted accordingly.

In accordance with the NDIS Pricing Arrangements and Price Limits, there may be times where we charge travel both to and from the last appointment of the day.

Travel charges are negotiated as part of the Service Agreement.

The relevant MMM classification is the classification of the area in which the participant lives. Check the MMM map at: doctorconnect.gov.au/internet/otd/publishing.nsf/Content/locator

Payment terms

For Self-Managed, Plan-Managed and Fee for Service participants, payment is due within 7 days of receiving an invoice. If payment is not received after 21 days from invoice date, all services provided to you may be suspended. *

* Please Note: If your account remains unresolved for more than 28 days from invoice date, we reserve the right to refer the matter to a collection agency. Please note this may impact your credit rating and incur additional costs.

Goods and Services Tax (GST)

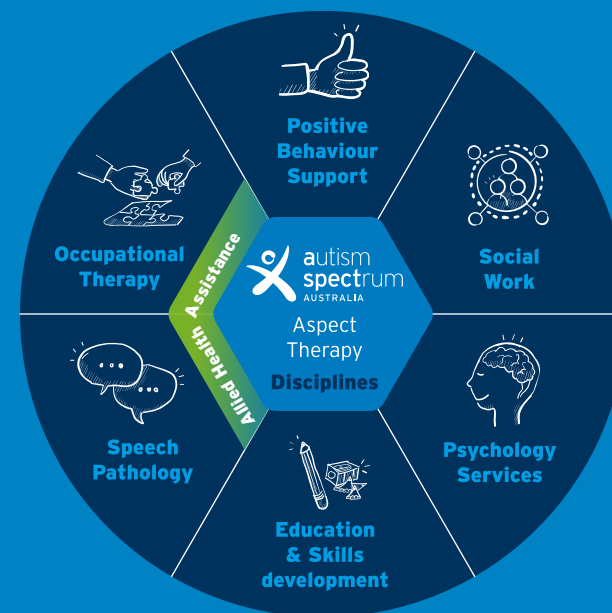
For the purposes of GST legislation, the Parties confirm that: "A supply of supports under a service agreement is a supply of one or more of the reasonable and necessary supports specified in the statement included, under subsection 33(2) of the National Disability Insurance Scheme Act 2013 (NDIS Act), in the participant's NDIS plan currently in effect under section 37 of the NDIS Act."

About Aspect Therapy

Our therapy services use key elements from behavioural, developmental and social learning, therapy-based and family-based support.

We deliver therapy supports in the environment that best suits you, your family, carers and supporters. This may be in the home, online via teletherapy or in another environment, such as at child care, preschool, school, out in the community, in day programs, or in one of our group-based therapy programs.

We also offer clinic-based services, holiday assessment clinics and outreach programs.



About Aspect Therapy



Speech Pathology

supports language, communication and social skills development.



Psychology

helps to understand and manage emotions, behaviour and social skills.



Occupational Therapy

focuses on building physical skills, support sensory preferences, and improving participation in everyday activities.



Positive Behaviour Support (PBS)

helps to prevent, understand and manage behaviours of concern.



Education & Skill Development

provides information, guidance and resources to maximise engagement, learning and meaningful participation in day-to-day activities and opportunities, and supports for transition to / between education settings.

Aspect Therapy also offers **parent training programs** including

- **Hanen More Than Words™**
- **Hanen Talkability™**
- **PBS Plus**
- **Autism in the Early Years**
- **Webinars and ebooks** (visit <https://shop.autismspectrum.org.au>)

Many of our therapy services include:

- An assessment of individual needs and current levels of functioning
- Developing and reviewing of an Individual Service Plan
- Individual therapy focused on core development needs
- Working with carers and other support persons to assist them to promote the individual's learning
- Providing resources that support learning and communication
- Session notes which include strategies to promote learning and development at home and in other settings
- Consultation and collaboration with other service providers and places of education
- Assistance to purchase resources to support intervention
- Summary report
- Travel and administration

Accessing our services

You contact Aspect
Therapy by email or by
calling us on
1800 277 328



You receive
an **email**
acknowledging
your enquiry



A member of our
Customer Experience
team contacts you to talk
about your **eligibility** for
accessing our supports

Are you
eligible?

Yes

No

We refer you
to the most
appropriate provider

**You are placed on our
waitlist and are in the
queue** for a Support Call
from Aspect Therapy



Your appointed
therapist
contacts you



You sign a
Service Agreement,
and we work together
to develop your
**Individual
Support Plan**



**Your Aspect
Therapy supports
start**

Frequently Asked Questions

I don't have NDIS funding...
Can I still access supports?

Yes, you can access any of the services listed in the Aspect Therapy Fees guide. You will be invoiced directly for these services.

What happens if I cancel
an appointment?

Cancellation rates apply if you cancel an appointment less than 7 days prior to the agreed meeting time, or if you are not present at the agreed meeting time. Aspect Therapy claims 100% of the support fee for short notice cancellations (see page 6).

If we give you all of our
funding package, can we
have a discount?

Unfortunately we cannot offer a discount as we are not paid in advance by the NDIA: we can only claim funding after an appointment has been delivered. Aspect Therapy does not earn any additional income or manage your funds in a way that can be returned to you as a discount.

If you don't need to travel far
to see us, do we still need to
pay for travel?

All travel is negotiated as part of the service agreement. We take into account travel time (not distance) to your appointment and apply NDIS travel guidelines to our pricing.

Could we choose not to pay
for a certain part of the
service (for example, an
assessment report or
correspondence with other
service providers)?

You have choice and control over service provision. However there are elements that our therapists must complete: these includes developing plans, reviewing progress and collaborating. We often collaborate with other providers to deliver best practice and maintain NDIS requirements and strongly encourage you to support NDIS related service activities. Aspect Therapy works with you to determine the best possible plan for your needs and goals. The details of the plan are outlined in your service agreement, which acts as a future NDIS planning tool.

Frequently Asked Questions

Who can we receive support from at Aspect under the 'Other Professional' rate?

For Early Childhood Intervention and Therapy supports, an 'Other Professional' can be:

- a Speech Pathologist who is not certified by Speech Pathology Australia,
- a Social Worker who is not a member of the Australian Association of Social Workers,
- a Teacher,
- a Positive Behaviour Support Practitioner,
- a Provisional Psychologist,
- a professional not listed above but considered by Aspect to be appropriate to deliver supports in line with the NDIS Quality & Safeguarding Commission's requirements.

Why do I have to pay for reports or administration with my NDIS funding?

At Aspect, we believe a team oriented, holistic approach has greater benefits now and in the longer term for our participants. This is a core part of our philosophy and one that we are committed to. To achieve the best possible outcomes for our families and carers, we often need to collaborate with other parties.

There are many things we do 'behind the scenes' to maintain our person-centred, family-focused approach, deliver best practice and meet NDIS service compliance requirements. Some of these requirements include completing reports on behalf of our participants.

What if I am not sure about whether Aspect Therapy is able to meet my needs?

When you first contact us, an Aspect Therapy Operations Leader will discuss your needs to determine if Aspect Therapy is the best fit for you.

Aspect provides a range of adult and children supports to people on the spectrum and we will have conversations with you about these. If we agree that Aspect is not the best fit, we will assist by referring you to the most suitable provider.

Frequently Asked Questions

How long will I have to wait to access Aspect Therapy services?

There is a very high demand for our supports, and we do our best to allocate you to an Aspect Therapist as quickly as possible.

We understand that wait times can feel quite lengthy and we are committed to expanding our workforce to ensure you can access the service with minimal delay.

What happens to my funds if I decide to change service providers?

Aspect Therapy sends invoices once we have completed a session with you. If you choose to cease working with us at any time, we will release the remaining funds from the NDIS portal. These funds are then available for you to use with any another provider.

Can my child receive supports from Aspect Therapy at school?

If your child's goals are best supported in a school setting, Aspect Therapy may be able to provide supports at the school. You will need to negotiate with the school principal and teacher prior to commencing the service.

I can get the same service 'around the corner' for less... so why choose Aspect?

There are many providers with different skills and experience, and their rates vary accordingly. Our rates are based on 50+ years of autism expertise so we can confidently offer you evidence-based, best practice therapeutic supports through a person-centered, comprehensive and collaborative approach.

Frequently Asked Questions

Can I see an Allied Health Assistant and not the therapist?

The therapist is your main point of contact to create and implement your service plan, and collaborates with the Allied Health Assistant to deliver the service to you.

The therapist is very much involved through the Allied Health Assistant, and has ultimate responsibility for best practice delivery.

Can we reduce therapist hours and increase Allied Health Assistant hours?

The therapist guides the program and works collaboratively with the Allied Health Assistant on all aspects of your service delivery.

Our best practice guidelines stipulate the minimum amount of visits for the therapist, and we ensure that we comply with what is required.

Can the Allied Health Assistant drop my child home after session?

The Allied Health Assistant's responsibility is to conduct the session with you at your chosen location, but this does not include travel to and from the location. Participant-related travel to an Aspect Therapy session is the responsibility of the family/carer.



We thank you
for taking the time to read this guide and
we look forward to working with you...